



9320/2 – Double wireless pushbutton

1- Safety warning

Warning: Failure to follow the safety guidelines provided below could result in damage to your Wireless Double Push Button or other property. Read all safety information below before using the Wireless Button.

- Avoid high humidity or extreme temperatures;
- Avoid prolonged exposure to sunlight or intense UV light;
- Do not drop or do not subject the unit to strong vibrations;
- Do not disassemble or try to repair the unit;
- Do not bring into contact with flammable liquids, gases and other explosive substances.

2 – Benvenuti

We present your Wireless Button 9320/2.

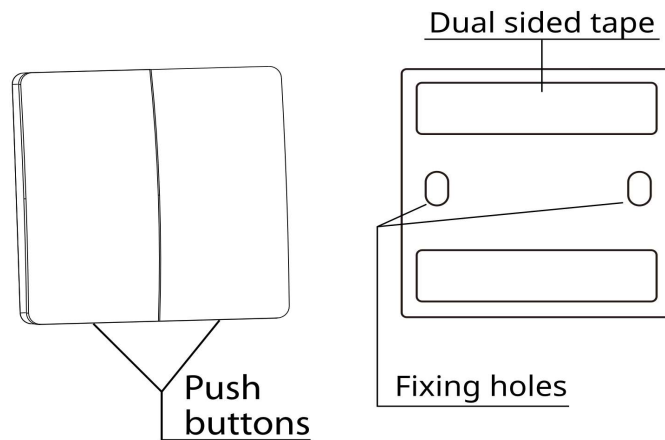
This button is self-powered by a small piezoelectric circuit and allows you to control the actuators of the FEB Easy series without ever having to worry about changing the batteries.

Each of the two pushbuttons can be used independently of each other, or they can be joined, in example to control a curtain actuator.

It is possible to use a single button to control more than one actuator and to use several buttons to control the same actuator.

In this guide you will find an overview of the product and instructions for installation and start-up.

3 - A detailed look at your device



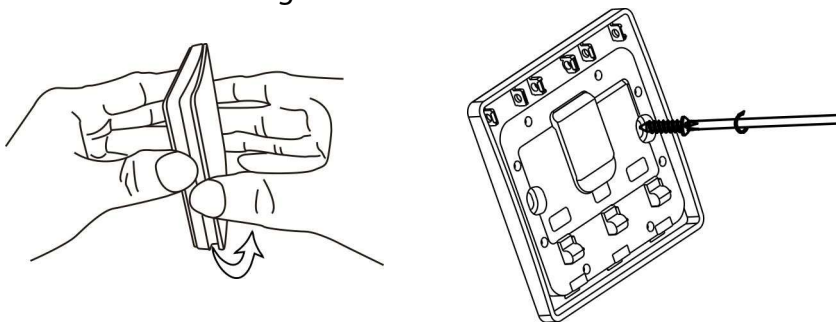
Your wireless pushbutton 9320/2

- **Buttons:** the two independent parts to press to send a signal
- **Fixing holes:** you can use these holes to fix the button to a wall or other surface
- **Dual sided tape:** here you can attach the two dual sided tape strips included in the box if you want to fix it to a smooth surface

4 - Installation

The 9320/2 piezoelectric button can be installed in three ways:

- Using the fixing holes in the base. To access these holes it is necessary to open the button. The image shows how: pull the movable part of the button away from the fixed part in a direction perpendicular to the base. The button cover will detach and you will have access to the screw holes. Use these holes to attach the button to a mounting bracket or directly to a wall, then close the button again.



Opening and fixing the button to a wall

- Using the strips of double-sided tape provided in the package, in case you decide to stick it on a surface where you do not want or cannot make fixing holes.
- It is also possible not to fix the button to any surface, so you can move it and always have it close to you.

5 – Start up

- To pair each of the two buttons of the 9320/2 with an actuator, simply press the pairing button of the actuator for about 3 seconds, until the LED indicator starts to flash, at this point press the button of the 9320/2 that you want to combine. Just press once. You will see that the actuator LED will stop flashing, indicating that the two have been paired. It is possible to connect more than one button to the same actuator, up to a maximum of 10 buttons. There are no limits, instead to the number of actuators that can be controlled by the same button, simply repeat the pairing procedure between the button and all the actuators that you want to be controlled by the same button.
- The 9320/2 module also allows you to control multiple actuators in coordinated mode, so that they all switch on and off together. In this mode, the double button behaves like a single object, with the left side that switches off or dims down the actuators and the right side that turns on or dims up. To connect the button to an actuator in coordinated mode, simply press the actuator pairing button for about 3 seconds, until the LED indicator starts flashing, at this point press one of the two buttons of the 9320/2 quickly 4 times. Once this is done, the actuator will be connected in coordinated mode. It is also possible to make a mixed connection, in which some actuators are connected to the button in coordinated mode and others in normal mode, in this case each actuator will behave according to the way it has been connected.
- To reset a connection between the actuator and the button, press the actuator pairing button for about 12 seconds. When the button is pressed, the LED indicator will first begin to flash, it will remain lit briefly and then go off. When this sequence is complete and the LED is off, the pairing button can be released and the actuator and all the buttons it was paired with will be disconnected.

6 – Technical characteristics

Wireless network: RF 433MHz

IP rating: IP67

Operating distance: Indoor <= 25m / Outdoor <= 60 m

Operating temperature: -5 - 50°C

Dimensions: 86 x 86 x 16 mm